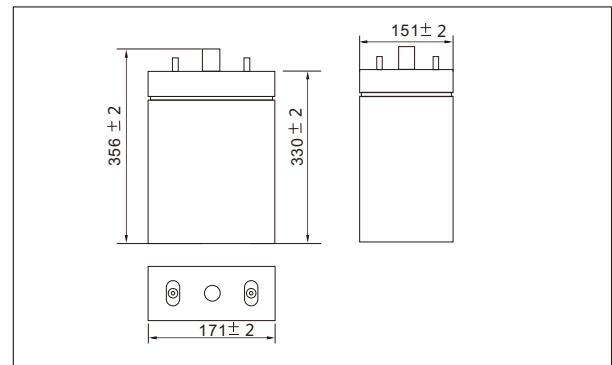




SW23000E(2V300AH)



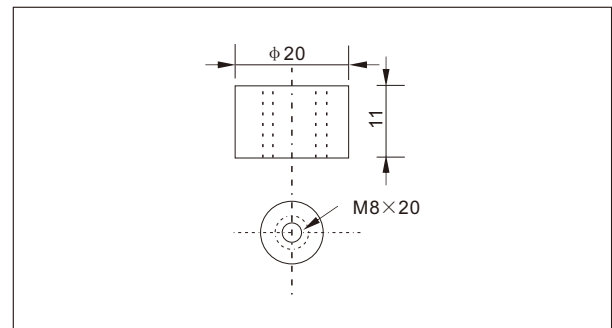
Outer dimensions (mm)



Specifications

Nominal Voltage		2 V
Rated capacity (10 hour rate)		250 Ah
Dimensions	Total Height	356 mm (14.0 inches)
	Height	330 mm (13.0 inches)
	Length	171 mm (6.7 inches)
	Width	151 mm (5.9 inches)
Weight Approx		18.5 Kg (40.7 lbs)

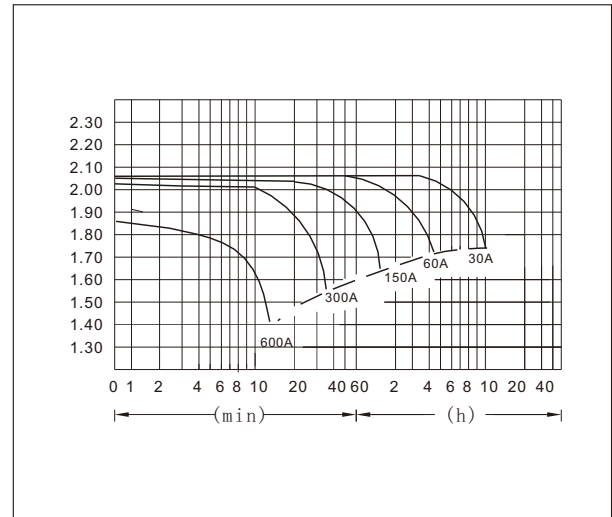
Terminal Type (mm)



Characteristics

Capacity 25°C(77°F)	10 hour rate(30 A)	300 AH
	5 hour rate(48A)	240 AH
	1 hour rate(180 A)	180 AH
	1.5 hour discharge to 1.75 V	120 A
Internal Resistance	Full charged Battery at 25°C(77°F)	0.7 mΩ
Capacity affected by Temperature (10hour rate)	40°C(104°F)	102%
	25°C(77°F)	100%
	0°C(32°F)	85%
	-15°C(5°F)	65%
Self-Discharge at 25°C(77°F)	Capacity after 3 month storage	91%
	Capacity after 6 month storage	82%
	Capacity after 12 month storage	64%
Terminal	T20	
Charge (constant Voltage)	Cycle	Initial Charging Current less than 75.0 A Voltage 2.35-2.40V
	Float	Voltage 2.25-2.30V

Discharge Curves 25°C(77°F)



Constant Current(Amp) and Constant Power(Watt) Discharge Table at 25°C(77°F)

Time		10min	30min	1h	2h	3h	4h	5h	8h	10h	20h
		1.60V	A	597.0	342.0	180.0	105.0	77.4	60.0	49.6	34.7
	W	1173	612	348	204	150	117.0	96.0	66.0	61.5	32.7
1.70V	A	567.0	333.0	169.2	100.2	75.0	58.5	48.6	34.1	31.1	16.8
	W	1128	606	327	192	144	114.0	93.0	66.0	58.5	32.1
1.75V	A	537.0	306.0	165.0	97.8	73.2	57.6	48.0	33.8	30.6	16.6
	W	1092	570	315	189	141	111.0	91.8	65.1	57.9	31.5
1.80V	A	507.0	282.0	159.0	95.4	71.4	56.7	46.8	32.9	30.0	16.4
	W	1050	549	303	186	138	108.6	90.0	63.0	57.6	31.2
1.85V	A	477.0	252.0	150.0	93.0	69.0	55.0	45.6	32.0	29.3	16.2
	W	990	504	294	183	138	106.5	89.4	60.3	57.0	30.8